

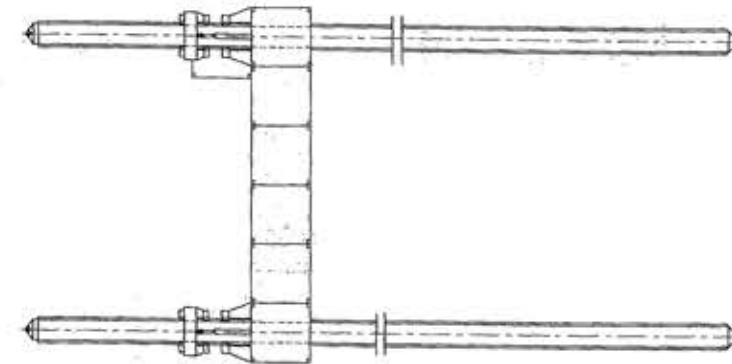
## STORK ANN



LENGTH : 24.40 m (80.05 ft)  
 BREADTH : 14.63 m (48.00 ft)  
 DEPTH : 2.44 m (8.00 ft)  
 GRT / NRT : 220 T / 66 T  
 PLACE / YEAR OF BUILD : NETHERLANDS / 2002  
 DECK STRENGTH: 4 T / m<sup>2</sup>  
 CLASS : TASNEEF GCC CODE CERTIFICATION  
 PORT OF REGISTRY : U.A.E.  
 REMARKS : SYSTEM OF 10 COUPLED 40 ft PONTOONS + 4 COUPLED 20 ft PONTOONS  
 (SUITABLE FOR ROAD TRANSPORT)  
 SPUD LENGTH: 27 m (4 NO.s)  
 GENERATORS / POWERPACKS / OFFICE  
 MOORING SYSTEM : 4 X DIESEL DRIVEN WINCHES COMPLETE WITH STEEL WIRE  
 ROPE / 4 X ANCHORS / 4 X BUOYS / 4 FAIRLEADS / PENNANT  
 WIRES / ETC

**NOTE:**

- 1) ALL DETAILS ARE GIVEN IN GOOD FAITH BUT WITHOUT GUARANTEE
- 2) PHOTOS ON SPECIFICATION SHEET MIGHT NOT SHOW CORRECT FITTING AS OFFERED OR CURRENT SETUP
- 3) ALL BARGES CAN BE FITTED WITH SPUDS, MOORING SYSTEMS, RAMPS & SIDEWALL CONCRETE DECK, ACCOMMODATION, CRAWLER CRANE, ETC.



DIMENSIONS  
 LENGTH 24.40m  
 BREADTH 14.64m  
 HEIGHT 2.44m  
 SPUDPILES 27.00m  
 10 CONTAINERS CP 4088  
 4 CONTAINERS CP 2088

