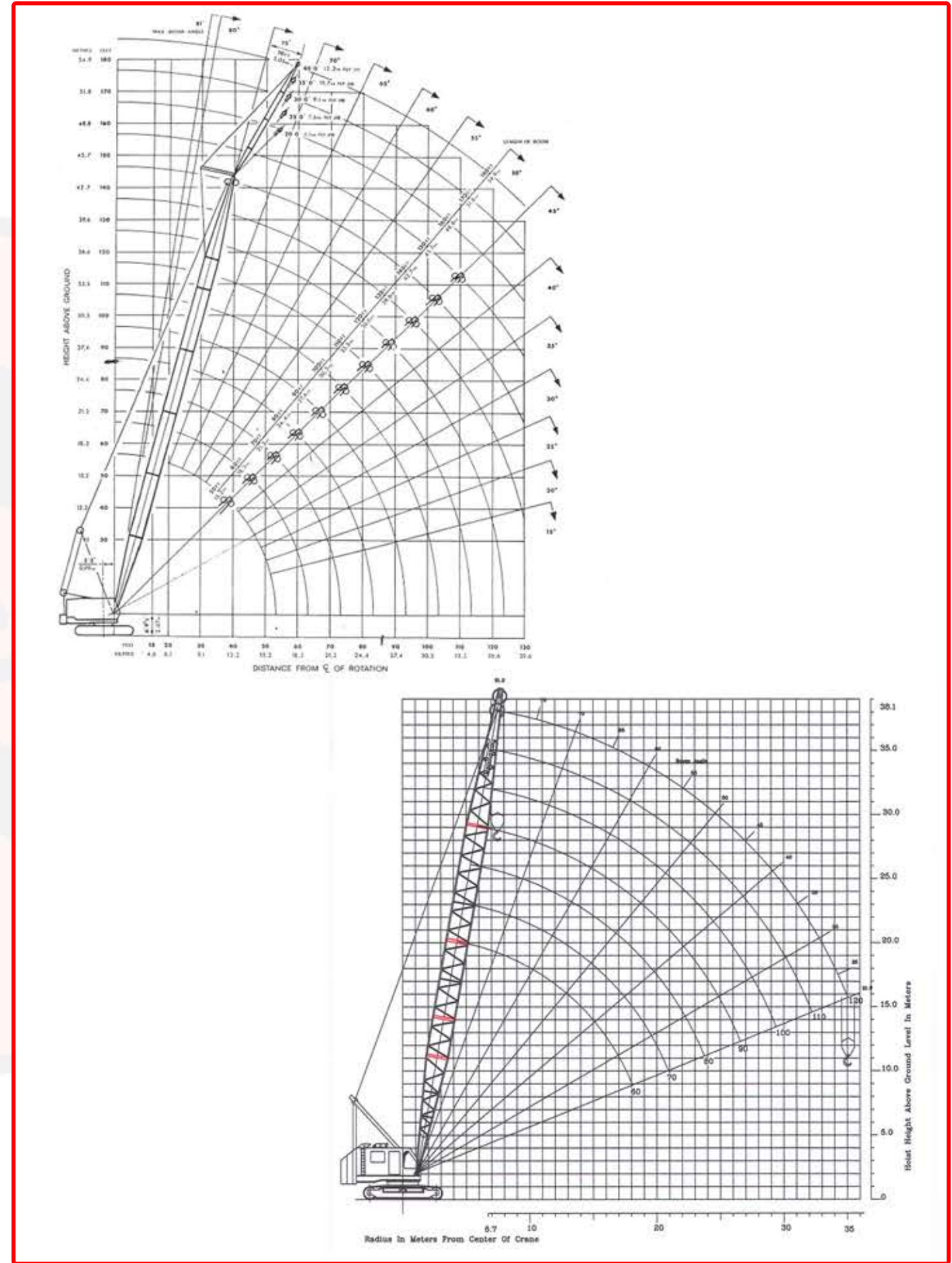




LSI CRANE LIST

- NCK 406**
30 TON CRAWLER CRANE - 80 ft BOOM (PRESSURIZED)
- SUMITOMO LS-138RH**
65 TON CRAWLER CRANE - 80 ft BOOM (PRESSURIZED / HYDRAULIC)
- MANITOWOC 3900**
90 TON CRAWLER CRANE - 130 ft BOOM (MECHANICAL SWING)
- MANITOWOC 3900 S2**
(FIXED CRANE / WITHOUT TRUCK OR TRACKS)
- 130 TON CRAWLER CRANE - 120 ft BOOM (MECHANICAL SWING)
- MANITOWOC 3900 S2**
130 TON CRAWLER CRANE - 120 ft BOOM (MECHANICAL SWING)
- MANITOWOC 4000**
160 TON CRAWLER CRANE - 170 ft BOOM (MECHANICAL SWING)
- MANITOWOC 4100 S2**
205 TON CRAWLER CRANE - 180 ft BOOM, 40 ft FLY JIB
(PRESSURIZED / HYDRAULIC)
- MANITOWOC 4600 S4**
350 TON CRAWLER CRANE - 180 ft BOOM
(PRESSURIZED / HYDRAULIC)



NOTE:
ALL DETAILS ARE GIVEN IN GOOD FAITH BUT WITHOUT GUARANTEE